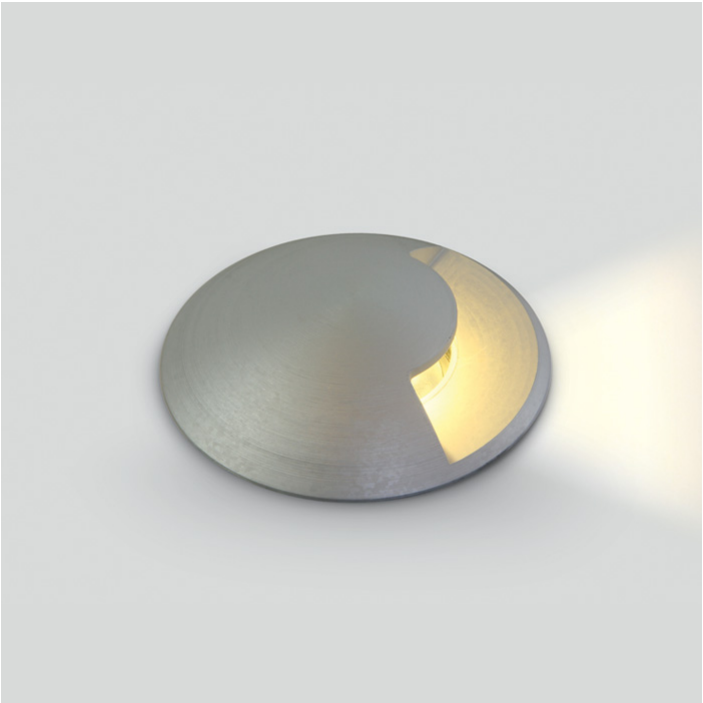




Product Datasheet

19 Wall Recessed & Inground>The Inground Maxi Series LED Aluminium

69016B/W



3W COB LED inground, aluminium, for path illumination, IK08, IP67.

Supplied with non-dimmable LED driver.

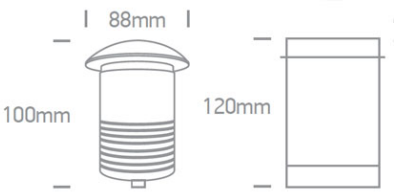
Complies with standard EN60598-1 and any other specific standards.



Downloads



Dimensions



Gallery





Physical Specification

Item Group	19 Wall Recessed & Inground
Family	The Inground Maxi Series LED Aluminium
Order Code	69016B/W
Colour	Aluminium
Material	Aluminium
Shape	Circular
Height	120mm




Diameter	88mm
Cutout Hole Diameter	77mm
Inground	Yes
Depth Required	130mm+300mm drainage
Indoor	Yes
Outdoor	Yes
IK Rating	8


Electrical Characteristics

Gear	Built In
Fitting + Driver	
Input Voltage	100-240V
50 Hz	Yes
60 Hz	Yes
Safety Class	
Power(Watts)	3W
IP Rating	IP67
Light Source	LED built in
Dimmable	No
Cable Length	200cm
F Mark	

Fitting	
Input Type	Constant Current
Input Current	350mA
Voltage	8V
Power(Watts)	2,8W
IP Rating	IP67
Light Source	LED built in
LED Type	SMD 1208

LED Brand	Edison
Gear	
Gear Type	Led Driver
Input Voltage	100-240V
50 Hz	Yes
60 Hz	Yes
Power(Watts)	1-4W
Power Factor	0,5
Constant Current	Yes
350mA	3-11V
IP Rating	IP20
Safety Class	
Dimmable	No
Housing Material	Plastic
Brand	Gallop

Illumination Data

Colour Temperature	3000K
Lumen Output	100lm
Light Efficiency	33,33lm/W
CRI	80
Illumination Diagram	

Packing Info

Box Length	18,5cm
Box Width	12,5cm
Box Height	12,5cm
Box Weight	0.850kg
Pcs/Carton	18

Barcode

5291889053477

HS Code

9405413990

Certification & Warranty

Warranty

2 years

