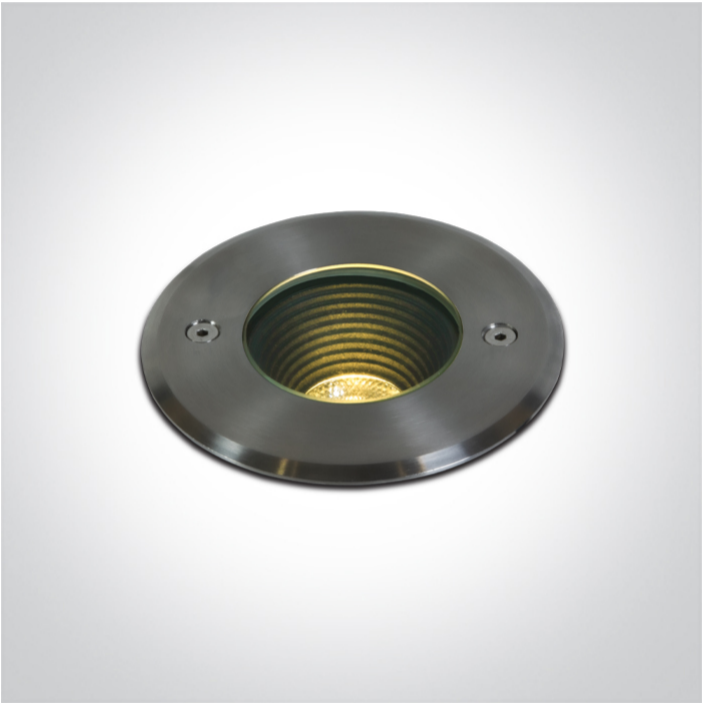




Product Datasheet

19 Wall Recessed & Inground>The Dark Light Inground Range

69070A/W



3,5W COB LED inground uplighter. IP67, stainless steel 316L and die cast aluminium body.

Supplied with non-dimmable LED driver and box for concrete installation.

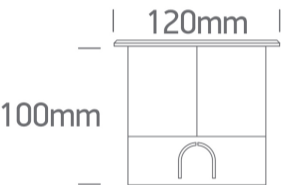
Complies with standard EN60598-1 and any other specific standards.



Downloads



Dimensions



Gallery





Physical Specification

Item Group	19 Wall Recessed & Inground
Family	The Dark Light Inground Range
Order Code	69070A/W
Colour	Stainless Steel
Material	Die Cast
Shape	Circular
Height	100mm



Diameter	120mm
Cutout Hole Diameter	100mm
Inground	Yes
Depth Required	120mm+300mm drainage
Indoor	Yes
Outdoor	Yes
Adjustable	No
IK Rating	10

Electrical Characteristics

Gear	Built In
Fitting + Driver	
Input Voltage	220-240V
50 Hz	Yes
60 Hz	Yes
Safety Class	
Power(Watts)	3,5W
IP Rating	IP67
Light Source	LED built in
Dimmable	No
Cable Length	200cm
F Mark	

Fitting	
Input Type	Constant Current
Light Source	LED built in
LED Type	COB
LED Brand	Cree

Gear

Gear Type
Input Voltage
50 Hz
60 Hz
Power Factor
Constant Current
Dimmable
Housing Material
Output Terminal

Led Driver
220-240V
Yes
Yes
0,4
Yes
No
Plastic
Connector

Illumination Data

Colour Temperature
Lumen Output
Light Efficiency
CRI
Beam Angle
Illumination Diagram
Dark Light

3000K
300lm
85,7lm/W
80
20°

Yes

Packing Info

Pcs/Carton
Barcode
HS Code

20
5291889079668
9405413990

Certification & Warranty

Warranty

2 years

Weee Directive

Yes

